

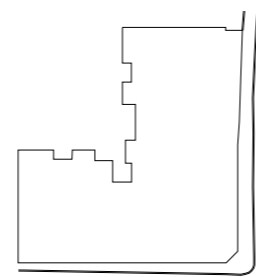
# APARTMENT 2I

Second Floor

3 Bedroom

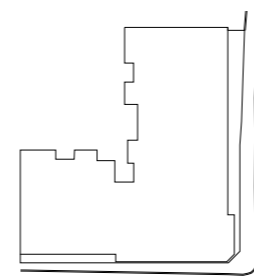
£795,000

-  CLIFF EDGE BOUNDARY
-  PAVEMENT
-  APARTMENT POSITION
-  SEAVIEW



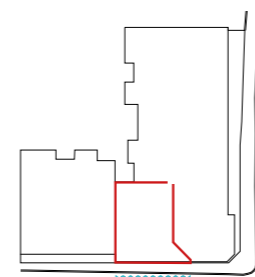
ULALIA ROAD

GROUND FLOOR



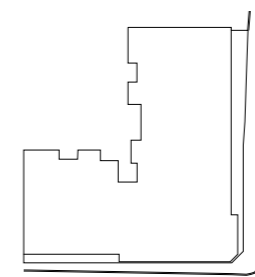
ULALIA ROAD

FIRST FLOOR



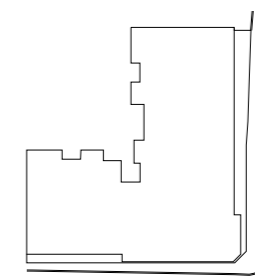
ULALIA ROAD

SECOND FLOOR



ULALIA ROAD

THIRD FLOOR



ULALIAROAD

FOURTH FLOOR



Kitchen, Living, Dining	<b>7.4 x 7.7m</b> 22' 0" x 22' 0"
Bed 1	<b>3.7 x 6.0m</b> 13' 1" x 19' 8"
Ensuite	<b>2.3 x 1.5m</b> 8' 10" x 5' 7"
Bed 2	<b>4.6 x 3.4m</b> 12' 2" x 11' 10"
Ensuite	<b>2.3 x 1.5m</b> 7' 3" x 4' 11"
Bed 3	<b>3.4 x 3.1m</b> 11' 10" x 14' 9"
Family Bathroom	<b>2.4 x 1.7m</b> 9' 6" x 4' 11"
Utility	<b>1.9 x 2.5m</b> 4' 3" x 6' 3"
<b>Total Internal Space</b>	<b>136.0m<sup>2</sup></b> 398.3sq/ft
<b>Total Terrace Space</b>	<b>37.0m<sup>2</sup></b> 398.3sq/ft
<b>TOTAL</b>	<b>173.0m<sup>2</sup></b> 1862.1sq/ft

Floor plans shown are for reference only and measurements are approximate and may vary. Exact layouts and sizes may vary. Dimensions, internal layouts, furniture, wardrobes, appliance specification and location are indicative only.

