



HIGHTIDE

NEWLYN, CORNWALL

PLOT 5

THREE BEDROOM

PLOT 5 PROVIDES SPACIOUS LIVING ARRANGEMENTS OVER TWO STOREYS.

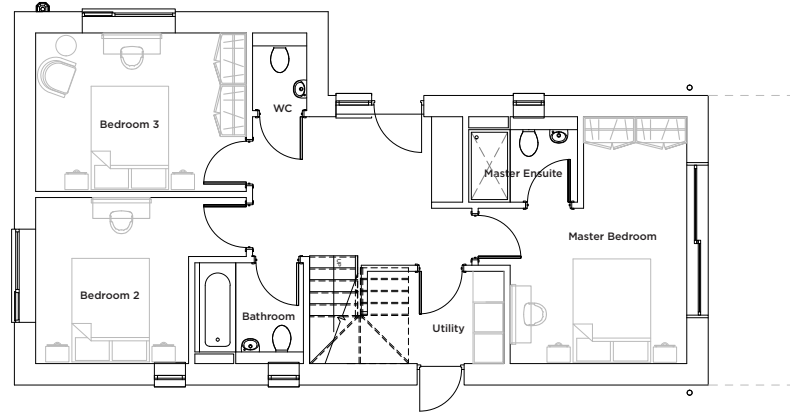
The ground floor entrance leads you to three bedrooms, an ensuite, a family bathroom along with a cloakroom toilet. Stairs lead upstairs to a contemporary open kitchen and dining area and a spacious lounge with balcony and large terrace perfect for alfresco dining.

GROUND FLOOR

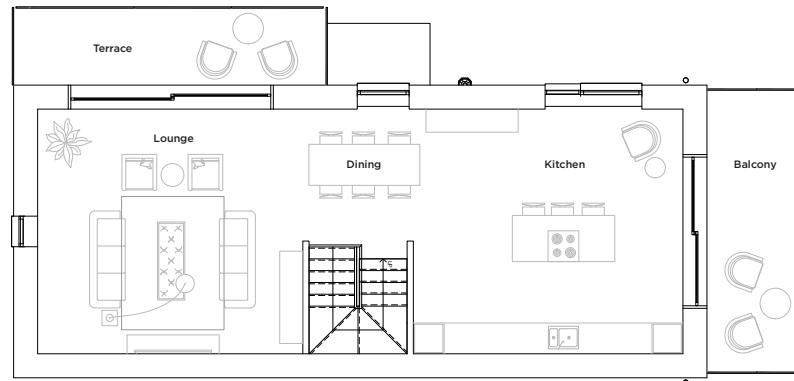
Master Bedroom	14.49 sqm
	155.9 sqf
Master Ensuite	3.46 sqm
	37.2 sqf
Bedroom 2	12.47 sqm
	134.2 sqf
Bedroom 3	10.77 sqm
	115.9 sqf
Bathroom	4.09 sqm
	44 sqf
WC	1.57 sqm
	16.8 sqf
Utility	4.49 sqm
	48.3 sqf

FIRST FLOOR

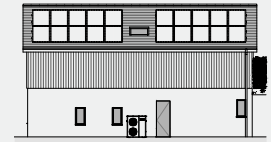
Dining / Kitchen	28.56 sqm
	307.4 sqf
Living	27.5 sqm
	80.7 sqf
Balcony	10.42 sqm
	112.1 sqf
Terrace	9.39 sqm
	101 sqf



GROUND FLOOR



FIRST FLOOR



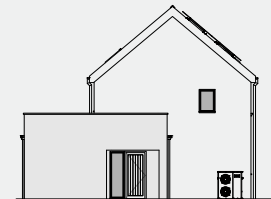
South West



South East



North East



North West

*Floor plans shown are for reference only and measurements are approximate and may vary. Exact layouts and sizes may vary.