



HIGHTIDE

NEWLYN, CORNWALL

PLOT 4

FOUR BEDROOM

PLOT 4 PROVIDES SPACIOUS LIVING ARRANGEMENTS OVER TWO STOREYS.

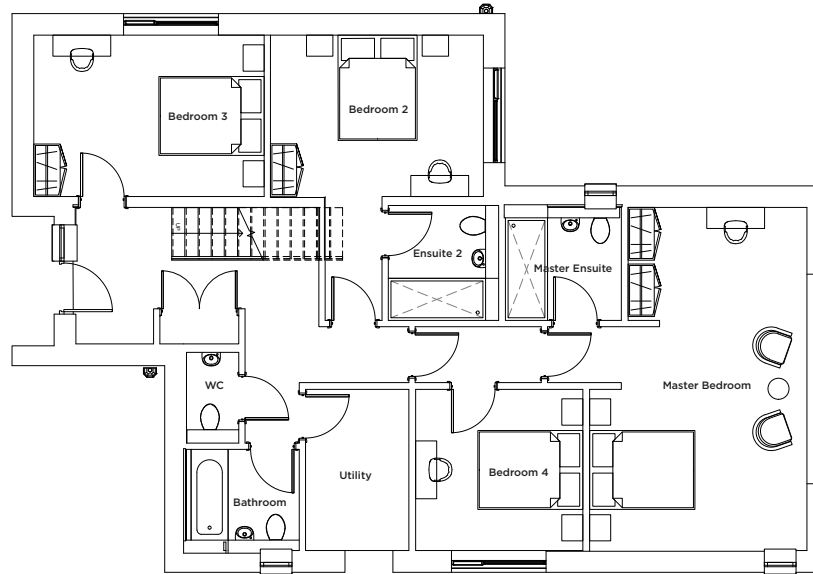
The ground floor entrance leads you to four bedrooms, two ensuite, a family bathroom along with a cloakroom toilet. Stairs lead upstairs to a contemporary open kitchen and dining area and a spacious lounge with balcony and large terrace perfect for alfresco dining.

GROUND FLOOR

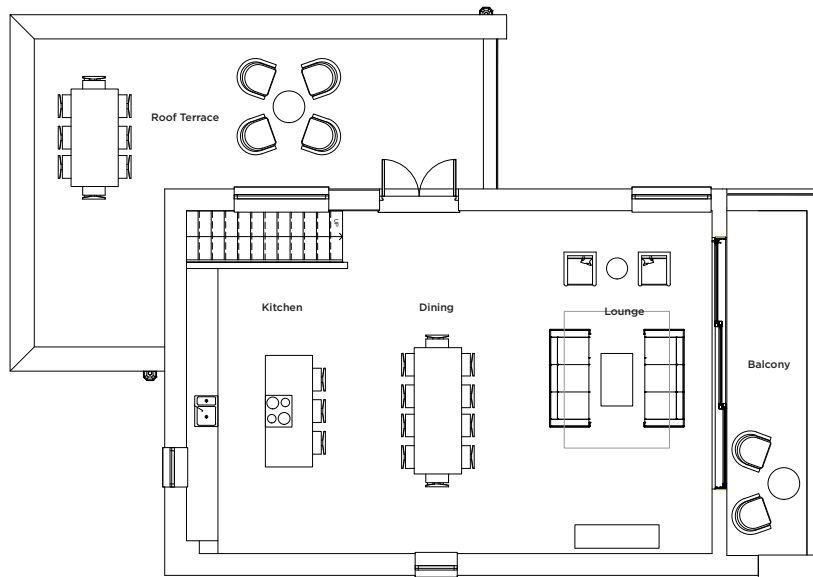
Master Bedroom	25.97 sqm
	279.5 sqf
Master Ensuite	4.79 sqm
	51.5 sqf
Bedroom 2	14.97 sqm
	161.1 sqf
Ensuite 2	4.59 sqm
	49.4 sqf
Bedroom 3	13.42 sqm
	144.4 sqf
WC	1.71 sqm
	18.4 sqf
Bathroom	4.32 sqm
	46.5 sqf
Utility	6.00 sqm
	64.5 sqf

FIRST FLOOR

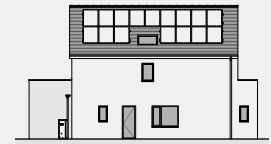
Dining / Kitchen	35.06 sqm
	376.71 sqf
Living	26.60 sqm
	286.32 sqf
Balcony	12.58 sqm
	135.4sqf
Roof Terrace	31.72 sqm
	341.4sqf



GROUND FLOOR



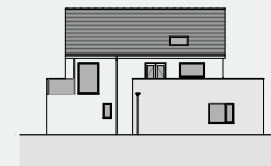
FIRST FLOOR



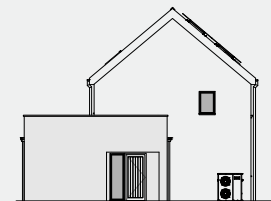
South West



South East



North East



North West

*Floor plans shown are for reference only and measurements are approximate and may vary. Exact layouts and sizes may vary.