



HIGHTIDE

NEWLYN, CORNWALL

PLOT 3 FOUR BEDROOM

PLOT 3 PROVIDES SPACIOUS LIVING ARRANGEMENTS OVER THREE STOREYS.

The ground floor garage and entrance leads you to two ensuite bedrooms on the entrance level, along with a cloakroom toilet. Stairs take you downstairs to a lower ground floor where there is a further two bedrooms with shared bathroom and storage. A contemporary open kitchen and dining area and a spacious lounge can be found on the upper floor with balcony and terrace perfect for alfresco dining and to maximise the view of the sea.

LOWER GROUND FLOOR

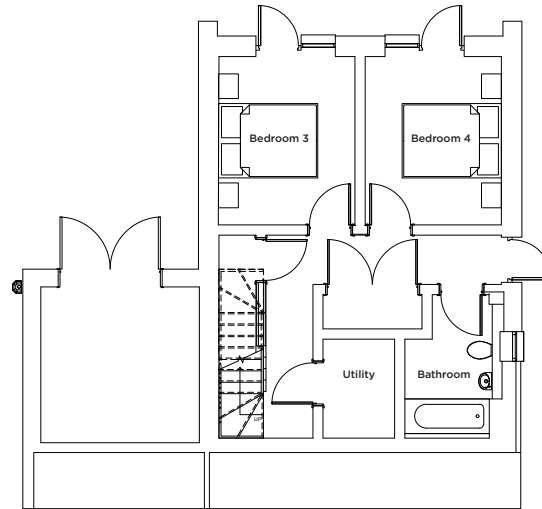
Bedroom 3	9.62 sqm 103.5 sqf
Bedroom 4	9.62 sqm 103.5 sqf
Bathroom	4.91 sqm 52.9 sqf
Utility	2.87 sqm 30.9 sqf

GROUND FLOOR

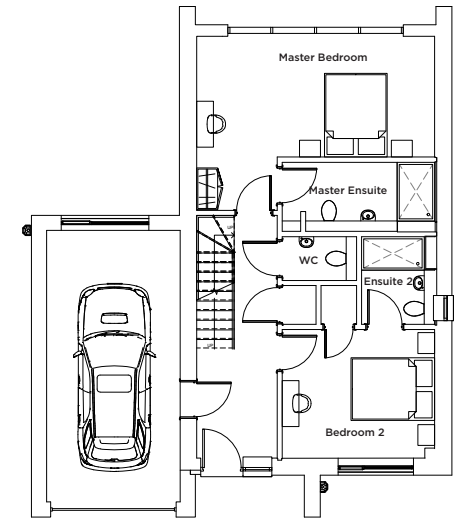
Master Bedroom	19.18 sqm 206.5 sqf
Master Ensuite	6.09 sqm 65.5 sqf
Bedroom 2	11.19 sqm 120.4 sqf
Ensuite 2	3.75 sqm 40.4 sqf
WC	1.86 sqm 20 sqf

FIRST FLOOR

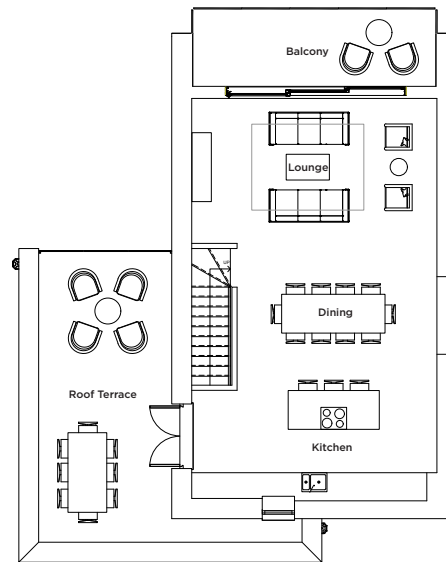
Dining / Kitchen	30.11 sqm 324.1 sqf
Living	19.25 sqm 207.2 sqf
Balcony	9.81 sqm 105.6sqf
Roof Terrace	31.72 sqm 341.4sqf



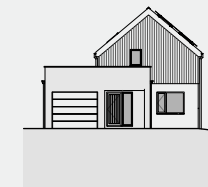
LOWER GROUND FLOOR



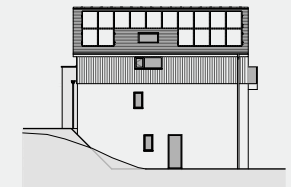
GROUND FLOOR



FIRST FLOOR



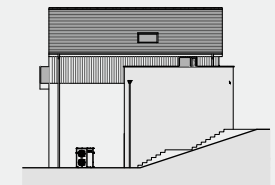
South West



South East



North East



North West

*Floor plans shown are for reference only and measurements are approximate and may vary. Exact layouts and sizes may vary.