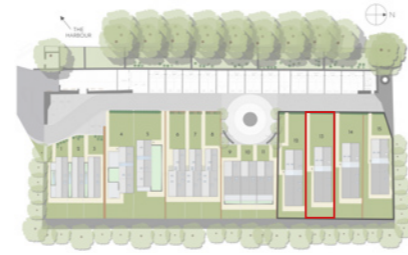


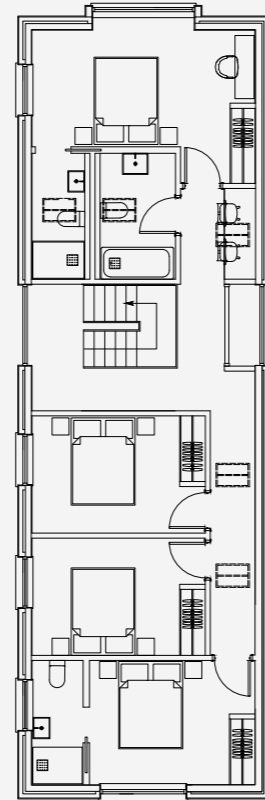
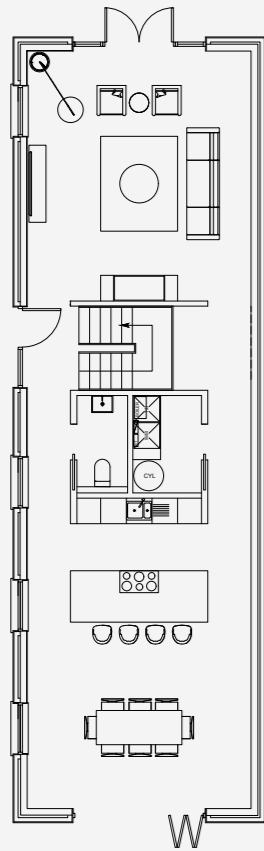
13

FOUR BEDROOM

£1,100,000



SITE PLAN LOCATION



Ground Floor

Living Room 12	5.5 x 3.3m	WC	2.2 x 1.8m
Living Room 13-15	5.2 x 3.3m	Utility	2.2 x 1.6m
Kitchen/Dining	7.2 x 5.2m		

First Floor

Master Bedroom 12	5.5 x 3.3m	Master En Suite	2.9 x 1.2m
Master Bedroom 13-15	5.2 x 3.3m	Bedroom 2 En Suite	2.8 x 1.2m
Bedroom 2	4 x 2.7m	Bathroom	2.9 x 1.7m
Bedroom 3	4 x 2.7m	Bedroom 4	4 x 2.7m

(Plot 12)	194 sq. m
(Plots 13-15)	186 sq. m

*Floor plans shown are for reference only and measurements are approximate and may vary. Exact layouts and sizes may vary.

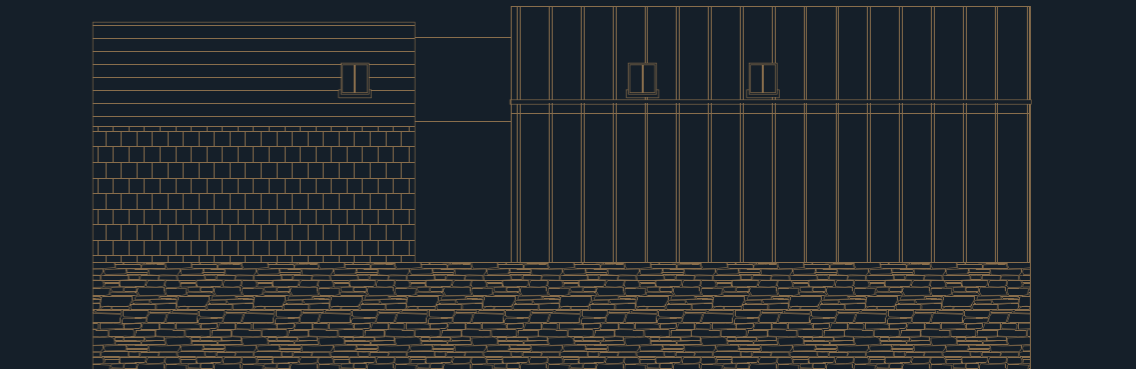
Plot 13 provides four bedrooms and a clever use of continually free-flowing design, across two storeys.

These houses provide the optimum maximisation of space for relaxed, family life. Upstairs, four double bedrooms benefit from two shared toilet rooms including one shared bathroom. The Master bedroom enjoys an en-suite and a double study/working-from-home area connects all areas on the beautiful landing above the double stairway.

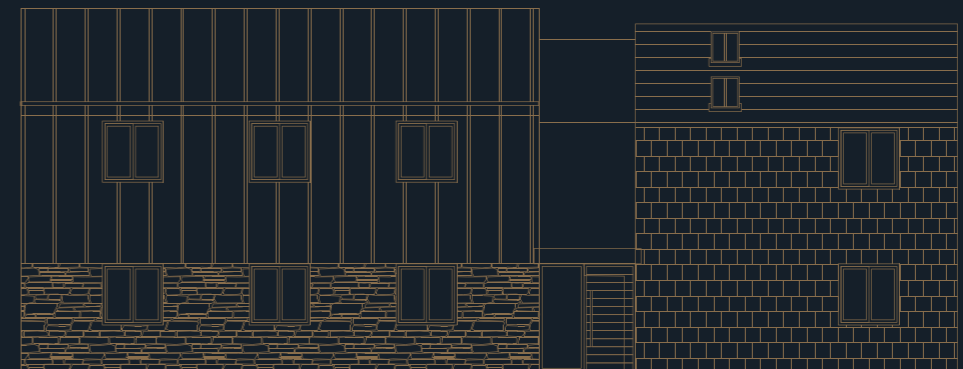
Downstairs, an innovative design has created a circular movement ability with two linked hallways allowing residents the opportunity to seamlessly transfer between the large living area at one end and the open plan kitchen and dining area, with a social able kitchen island in the centre of the space. A 'downstairs loo' and practical utility area are neatly nestled in the central core.



West Elevation



North Elevation



South Elevation



East Elevation