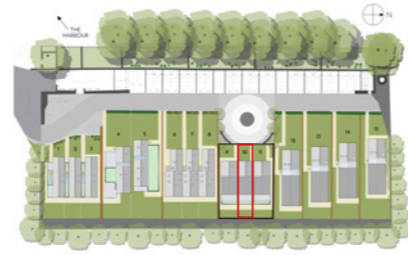


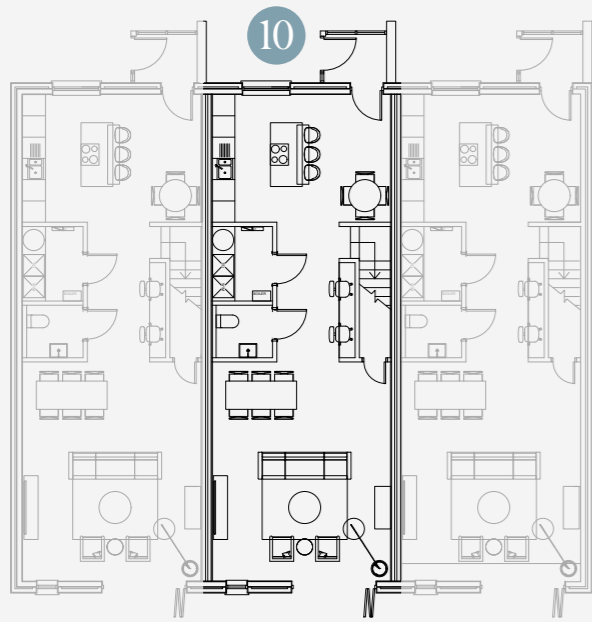
10

THREE BEDROOM

£765,000

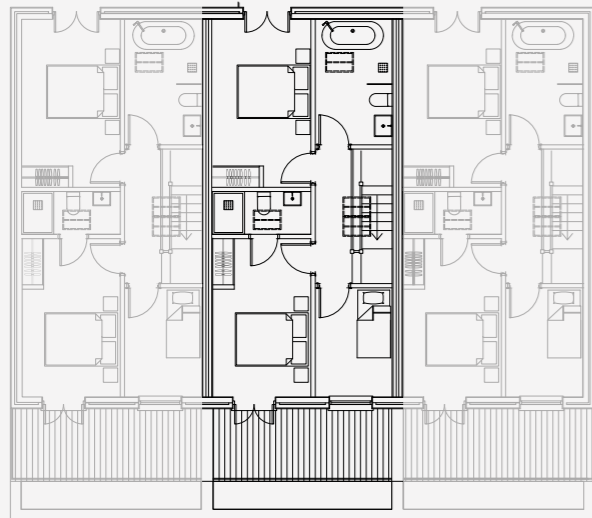


SITE PLAN LOCATION



Ground Floor

Kitchen	5 x 3.6m
Utility	2.1 x 1.7m
WC	1.7 x 1.4m
Living/Dining Room	6.1 x 5m



First Floor

Bedroom 1	4.7 x 2.7 m
Bathroom	3.5 x 2.1m
Bedroom 2	4.4 x 2.7m
Bedroom 2 En Suite	2.7 x 1.2m
Bedroom 3	3 x 2.1m
TOTAL	125 sq. m

*Floor plans shown are for reference only and measurements are approximate and may vary. Exact layouts and sizes may vary.

Plot 10 has been designed to maximise family life and style with an innovative use of shared facilities across the two storeys.

On the upper floor, three bedrooms (two kings and one single), have been maximised for size with an en-suite bathroom for the Master bedroom and a significantly proportioned family bathroom, all linked by a central walkway with a large storage cupboard.

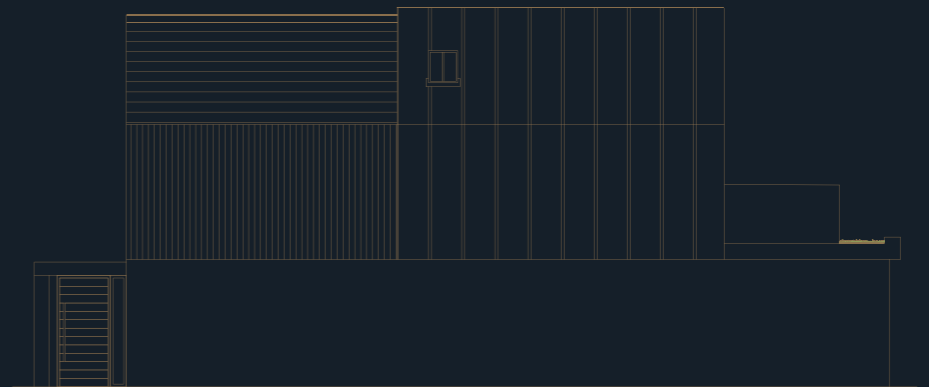
Downstairs, an open-plan, free flowing design links a 6.1 x 5m shared living, dining and entertaining space with a double study area and large 5 x 3.6m kitchen at the other end. A pragmatic 'downstairs loo' and utility room are neatly embedded and another large storage cupboard for all of life's little and large 'accessories' is accessible from the elegant entrance hall.



East Elevation



North Elevation



South Elevation



West Elevation